



MIXER MIX® TYPE MXC0030

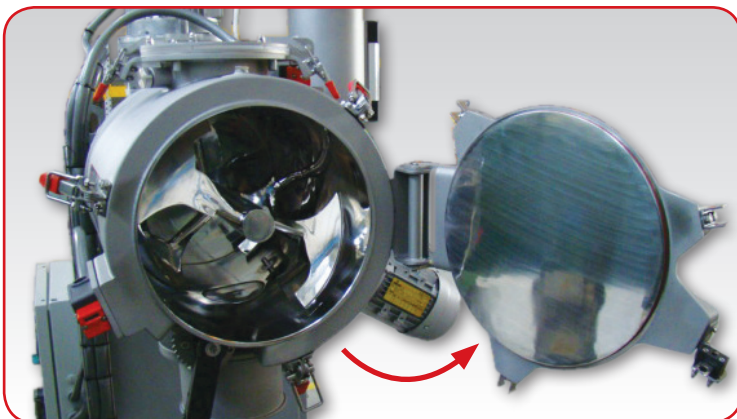


LABORATORY MIXER

- Heat Exchanger +2°C / + 98°C
- Outside Insulation
- Manual discharge door
- Front inspection door
- Charge door complete with accessories
- Injection system for liquids with tank
- Chopper with knives
- Temperature-probes inside chamber
- Surface finish inside
- Wheeled frame easy to move, and legs for positioning
- Electric control board with start/stop main drive - start/stop chopper - frequency converter - Display T° - emergency push-button

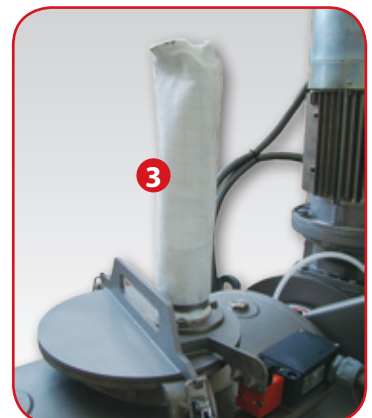
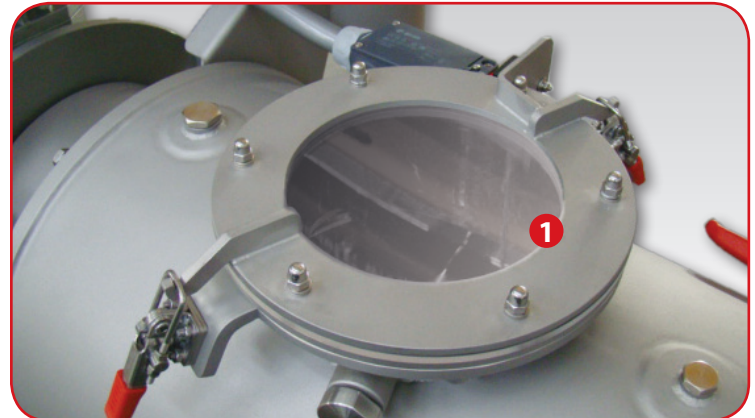
FRONT INSPECTION DOOR

- Easy cleaning
- All-round check inside the mixer wall
- Easy maintenance



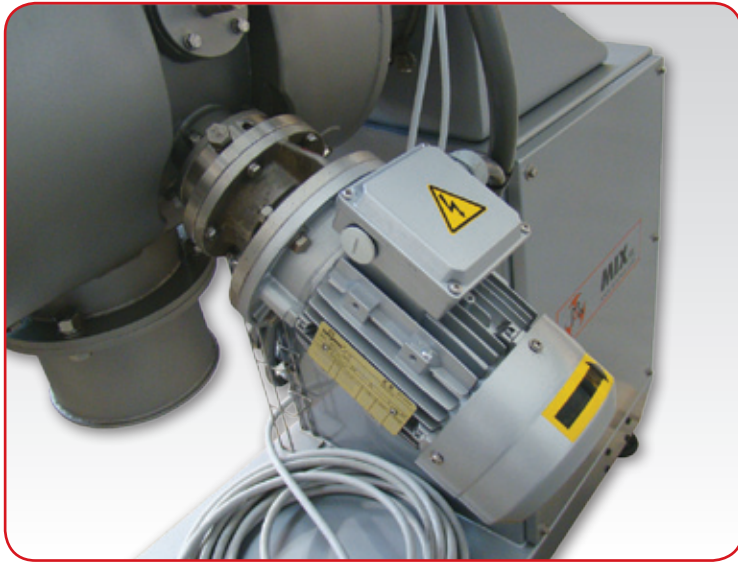
CHARGE DOOR

- 1 See-through facility
- 2 Charging hopper
- 3 Venting bag



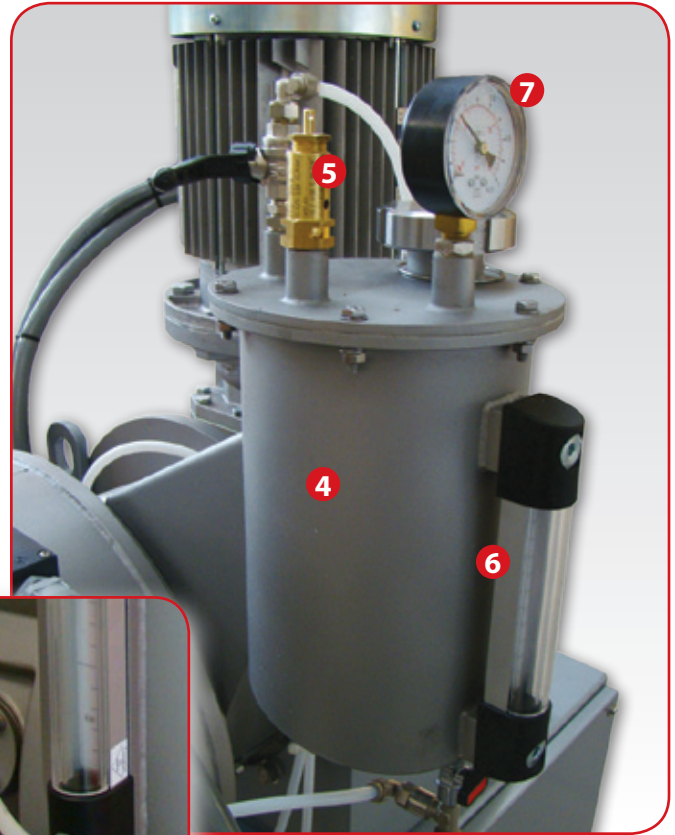
CHOPPER COMPLETE WITH KNIVES (OPTION)

- Efficiency lump breaking
- High turbulence mixing
- Wide range of knives for specific applications



TANK FOR LIQUIDS OF INJECTION

- ④ Tank with filling from top
- ⑤ Suitable for pressure injection
- ⑥ level gauge for liquids
- ⑦ Manometer for inside pressure control



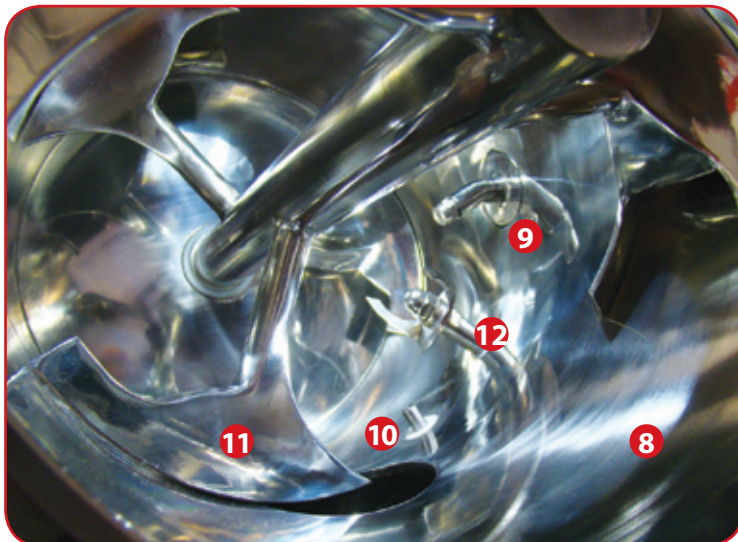
CONTROL OF THE INJECTION OF LIQUID

- Adjustment of the injected flow of liquid
- Timing management for the liquid injection



INSIDE CHAMBER

- ⑧ Inside grade of Polishing 0,5µm/0,8µm
- ⑨ Nozzle for liquid injection
- ⑩ Temperature-probes inside the mixer wall
- ⑪ Ploughs welded to the mixer shaft
- ⑫ Chopper shaft with knives



DISCHARGE DOOR

- ⑬ Round design rebuilding the mixer wall design
- ⑭ Manually operated
- ⑮ Complete with accident-prevention grid

