



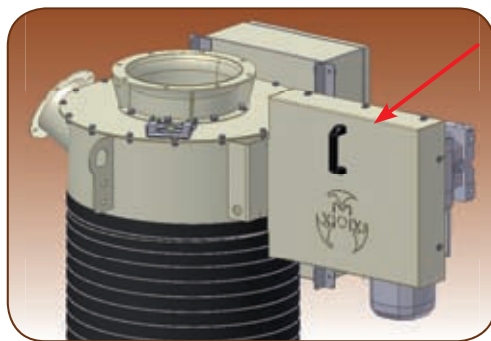
MIX S.r.l.

QUALITY MANAGEMENT SYSTEM CERTIFICATE UNI EN ISO 9001:2000

**MIXING SYSTEMS AND
COMPONENTS FOR PLANTS**

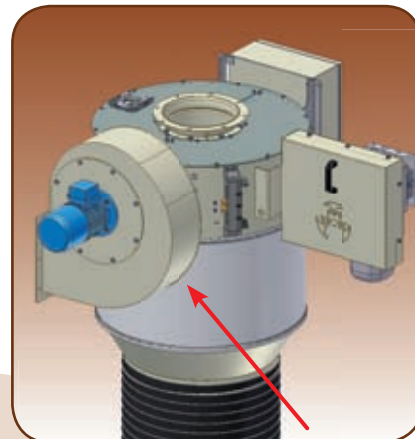
LOADING BELLOWS XIMIX® TYPE SC.301

EXCELLENCES :



COMPACT DRIVE
Easy Maintenance access

MODULAR DESIGN
◀ *with filter predisposition*
with assembled filter ▶

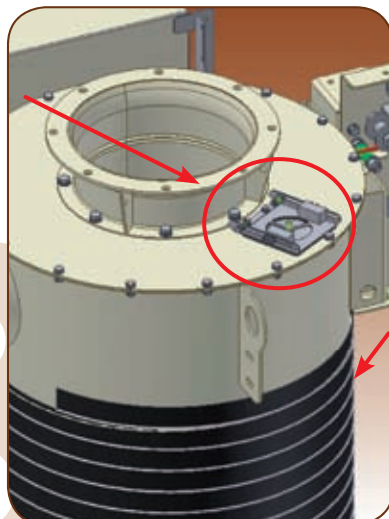


BLOWERS
Variety of power options

MODULAR VALVE

**Positive pressure /
negative pressure
control**

*It provides
pressure balance
at the duct, and it
prevents possible
pressure damage or
deformation*



MODULAR REINFORCED SHEATH

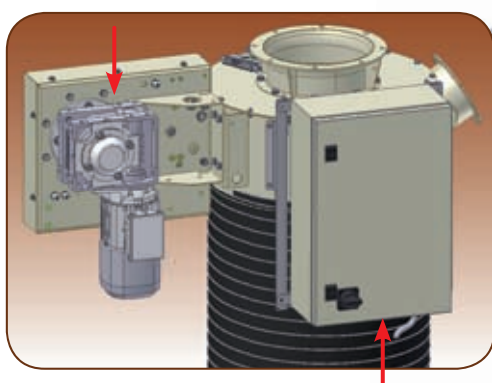
*Metal wire for
containment and guide*

INCORPORATED FILTER

- Compact
- Variety of modular filtering surfaces
- Pneumatic pulse jet cleaning

MODULAR AUTO-BRAKING GEAR SYSTEM

*It provides the highest safety and accuracy while
rising up and going down the loading spout*



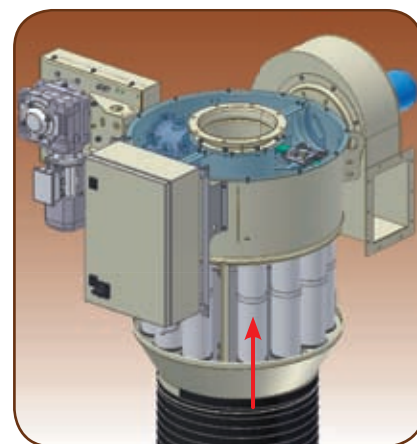
ELECTRIC CONTROL BOARD (optional)

With printed circuit board



PENDANT CONTROL PUSH BUTTON (optional)

- Graphic interface
with LED indicator
- Phase check
(motor Rotation controller
with LED indicator)

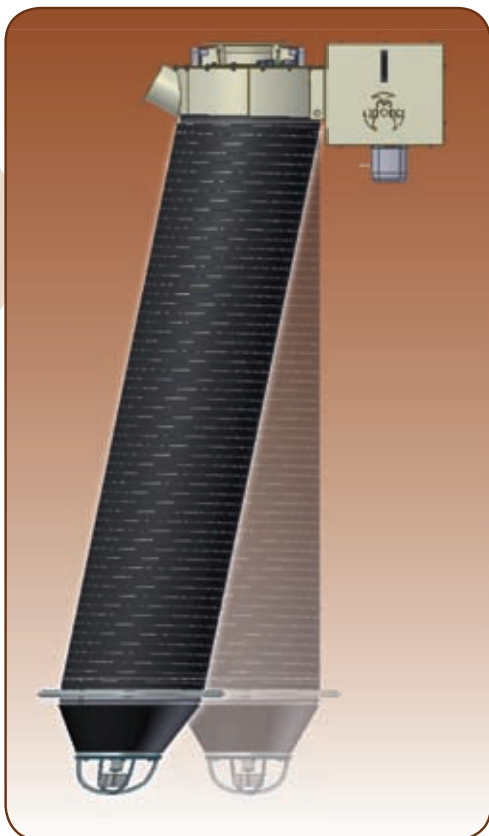


FILTERING ELEMENTS

- Easy access to filtering elements
- Variety of filtering units

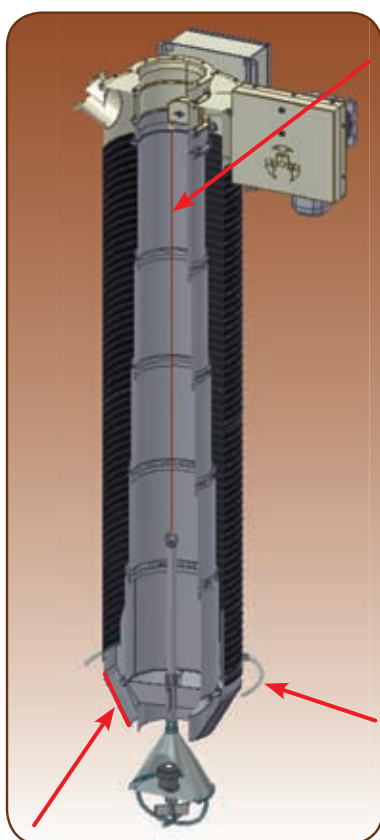
6 TRACTION CABLES

- *single cable*
option with
protected pulley
- *three cables*
option with
external pulley
(Bulk Material
contact free with
pulley)



MODULAR HINGED JOIN

Higher shifting and swinging
angle for safer truck connection



TELESCOPIC TUBES

- Perfect sliding
- Maximum product fall
by the increasing tube
diameter
- Minimum wear
- Reduction of the
powder generation

MODULAR SCHACKLE

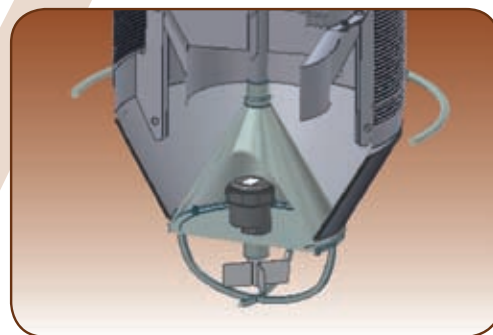
Accurate targeting for
the discharge point

MODULAR POSITIONING CONE

Special design conic rubber coating provides
accurate targeting and maximum sealing

MODULAR CLOSING CONE

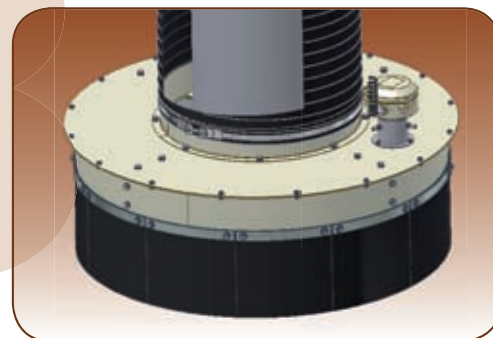
It prevents material leak while
operating the loading spout phase
of rising up or going down



MODULAR LEVEL INDICATOR

SKIRT SOLUTION FOR OPEN TRUCK

Maximum product flow



VERTICAL PACKING

- Fast
and easy
installation
- Reduction
dimension

