

VP2 900-1200-1500 1/X

POWDER SCREENING

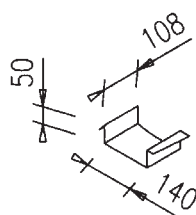


TECHNICAL FEATURES	900	1200	1500
Electrical power (kW)	0.62+0.62	0.62+0.62	0.9 + 0.9
Centrifugal force (kg)	1342	1342	2810
Sieving decks	1	1	1
Mesh surface (m ²)	0.587	0.932	1.575
Weight (kg)	200	250	320

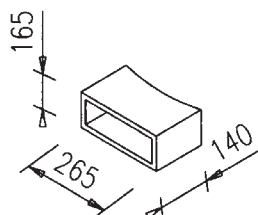
CONSTRUCTION FEATURES

- Open bottom with outlet
- Two side motovibrators, IP 65 insulation, ATEX zone 22 Certified
- Parts in contact with the product made of AISI 304 stainless steel

Rectangular outlet
(optional *1)

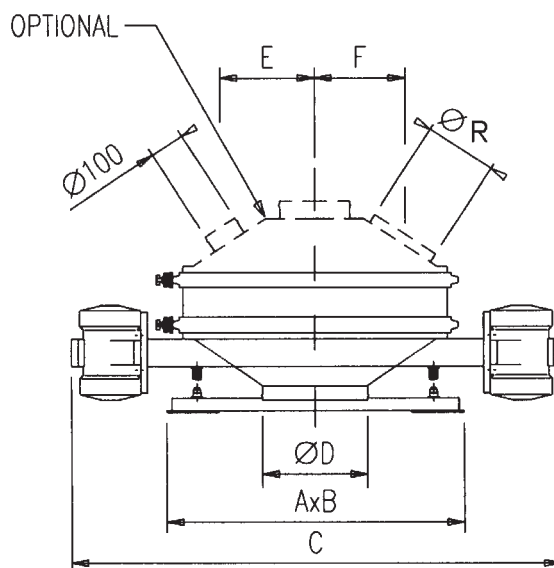
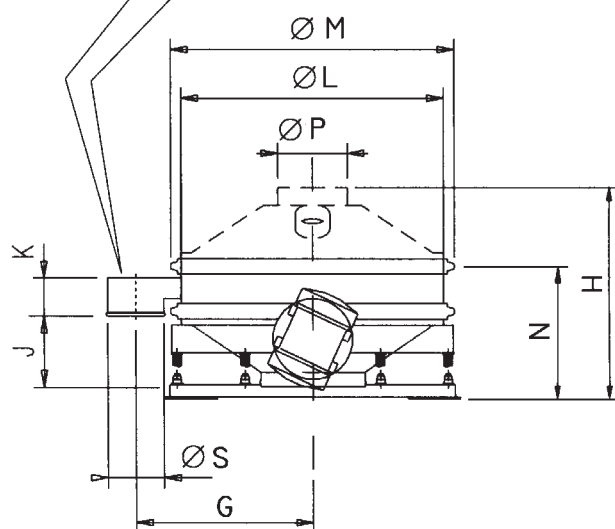


Rectangular outlet
(optional *2)



*1. Available only with screen element H = 150. The element height will also be H = 150 with round mouth.

*2. Available only with screen element H = 225.



Dimensions in mm.

MODELS	AxB	C	D	E	F	G	H	S	J	K	L	M	N	P	R
VP2 900 1/X	860x970	1510	400	280	270	615	700	160	305	110	947	993	325	200	1 x 200
VP2 1200 1/X	1110x1180	1730	400	315	315	725	843	160	355	110	1168	1225	560	200	2 x 200
VP2 1500 1/X	1403x1403	2393	500	375	375	924	861	200	459	115	1504	1571	685	300	3 x 200

APPLICATIONS

- On powder transport lines
- At storage bin discharge
- At spray-drier discharge
- At press supply stages
- At mill discharge

ADVANTAGES

- High capacity thanks to the big central outlet
- No scales left
- Easy to install thanks to its low profile

The data here indicated are purely indicative and can be modified by Cuccolini without any notice.

Precise values are communicated upon request.

Any unauthorized copy of this document will be legally pursued.